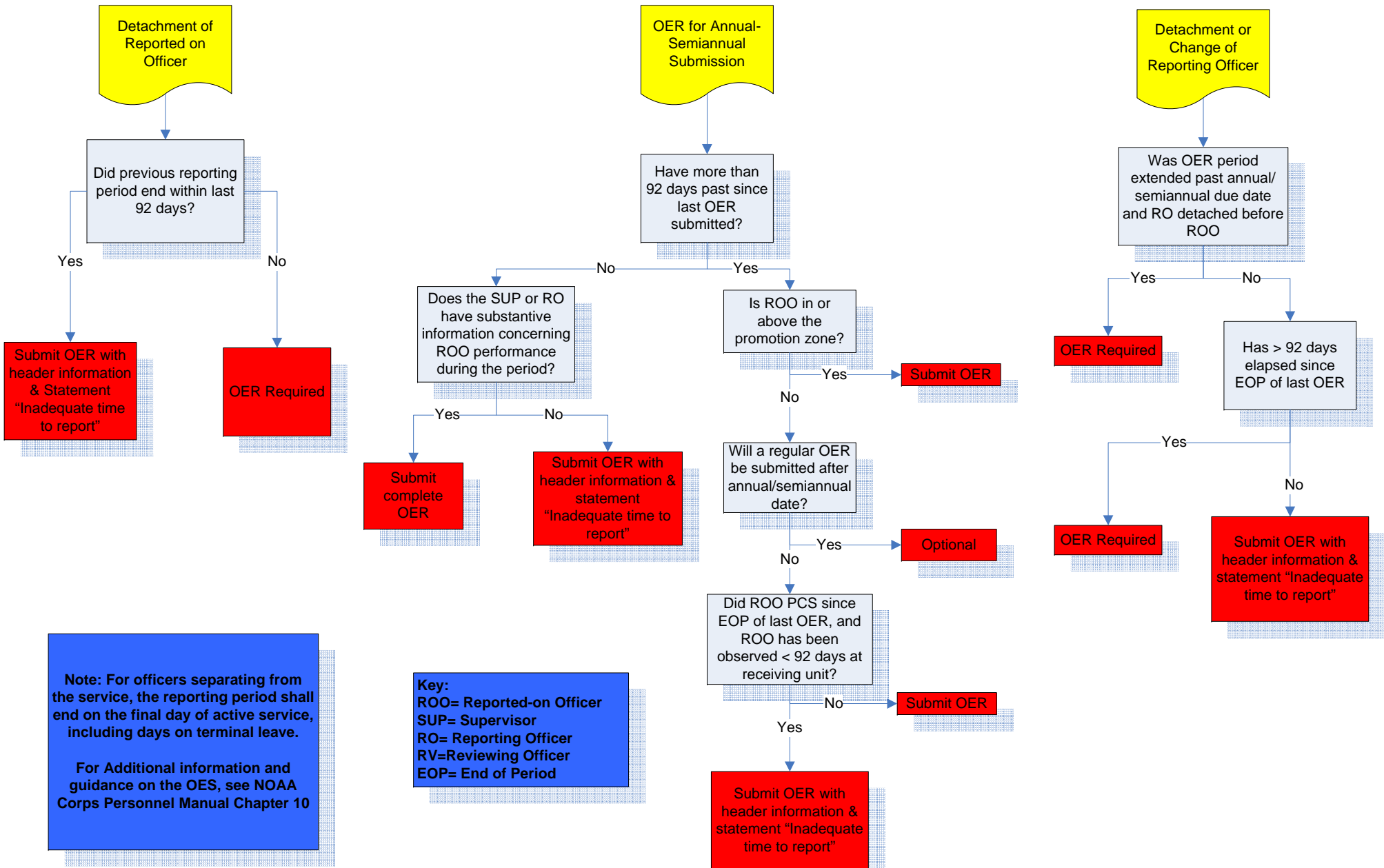


OER Submission Requirements



Note: For officers separating from the service, the reporting period shall end on the final day of active service, including days on terminal leave.

For Additional information and guidance on the OES, see NOAA Corps Personnel Manual Chapter 10

Key:
 ROO= Reported-on Officer
 SUP= Supervisor
 RO= Reporting Officer
 RV=Reviewing Officer
 EOP= End of Period